

# THE MICHELS FAMILY OF COMPANIES SOLUTIONS

**MICHELS®**

WE DO THAT

...

**& MORE**

[www.Michels.us](http://www.Michels.us)

# Energy Solutions

Life requires energy. Our teams have the experience and insight to move resources from traditional and renewable generation facilities through distribution to endpoint users. We design, build, maintain and expand all aspects of critical networks with high standards for safety and quality.

## **MICHELS PACIFIC ENERGY, INC.**

Our actions and decisions revolve around safety. Whether we are hardening electrical systems, building a way to move energy from a renewable plant to a distribution system, or rebuilding infrastructure after a natural disaster, we deliver safety and environmentally conscious solutions to the Western United States.

### **Pipeline Construction**

- Hydrogen
- Natural gas
- Oil
- Water

### **Electrical T&D Lines**

- Overhead & underground
- Up to 500kV

### **Emergency & Storm Response**

### **Facilities Construction**

### **Integrity & Maintenance**

### **Renewable Energy**

- Generation-tie lines
- Battery energy storage
- Underground & overhead collection systems

### **Substations**



## **MICHELS PIPELINE, INC.**

We partner with our customers to nurture the United States' transmission systems from initial planning to decommissioning, ensuring safety and integrity. Our full-service construction services support traditional and renewable resources.

### **Facilities Construction**

- Compressor, metering, pumping & regulator stations
- Horsepower additions

### **Integrity & Maintenance**

### **Pipe Fabrication**

- Custom fabrication
- Painting & coating applications
- Third-party non-destructive testing
- Welding

### **Transmission Pipeline Construction**







## **MICHELS POWER, INC.**

Overhead and underground delivery systems are complex. We are a national contractor for all scopes of energy transmission, distribution and substation projects from 69kV to 765kV. Informed by our past and inspired by the future, we tailor Engineer, Procure and Construct (EPC) solutions for traditional and renewable energy.

### **Foundations**

- Auger cast piles
- Direct embed
- Drilled shafts
- Driven piles
- Micropiles

### **Live Line Upgrades & Repairs**

- Barehand work
- Hot sticking
- Mechanical arms

### **Renewable Energy**

- Battery energy storage
- Collection systems

### **Substations & Indoor Wiring**

- Green/brownfield HV & EHV stations
- Testing & commissioning
- Hospitals, commercial & industrial
- Data Centers

### **Transmission & Distribution Lines**

- New, rebuild & relocation
- Overhead & underground
- Site & access road clearing & preparation
- Wire stringing

### **Emergency & Storm Response**



## **MICHELS UTILITY SERVICES, INC.**

From clean-burning natural gas to bundled utilities, we construct and maintain America's distribution infrastructure. We work throughout the United States under individual service contracts and master service agreements.

### **Distribution Pipeline Construction**

### **Distribution Regulator Stations & Vaults**

### **Integrity Management**

### **Duct Bank Installations**

### **Joint Installations**

## **MICHELS UNDERGROUND CABLE, INC.**

Our experience and equipment combine to build underground power transmission, power distribution, renewables and communication systems.

### **Underground Electric T&D**

### **Communication Networks**

### **Duct Bank Construction**

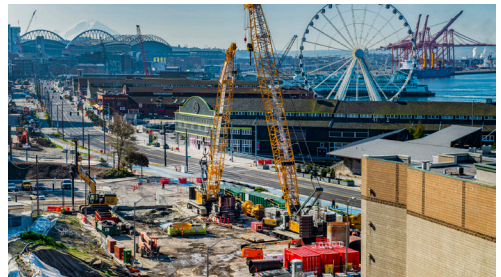
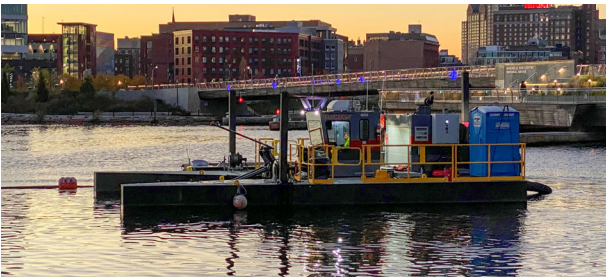
### **Renewables**

### **Offshore Wind**

### **Energy Collection Systems**

# Construction Solutions

Unique projects deserve strategically assembled teams capable of performing each specialized scope at the highest level. By using our civil, foundations, marine and trenchless teams to self-perform major scopes of work, we provide superior quality, uniform values, and streamlined communication and contracts.



## MICHELS CONSTRUCTION, INC.

We design and build safe, technically sound, value-engineered solutions for complex projects on land and water. Our skilled crews and specialized equipment meet our customers' goals for project success and stewardship.

### Deep Foundations

- Auger cast piles
- Drilled shafts (caissons)
- Driven piles
- Helical piers
- Micropiles

### Dewatering

- Bypass pumping
- Deep wells
- Trenching
- Wellpoints

### Earth Retention Systems

- Ground anchors & tiebacks
- Secant & tangent pile walls
- Sheet piles
- Soldier pile & lagging

### Ground Improvement

- Aggregate piers
- Dynamic compaction
- Rigid inclusions

### Industrial Construction

- Building & steel erection
- Epoxy & structural grout
- Equipment alignment
- Structural concrete

### Marine Construction

- Construction & restoration
- Hydrographic surveying
- Diving
- Dredging

### Federal Infrastructure

- Aviation
- Bridges
- Levee work & dam removals
- Rail cut & cover tunnels
- Water pump stations





## **MICHELS ROAD & STONE, INC.**

Our earth-moving, custom crushing, concrete production and material placement spreads are mobilized throughout the United States to address transportation and site preparation needs.

### **Airports**

- Paving runways, taxiways & ramps

### **Commercial Aggregates**

- Rail ballast
- Sand & gravel

### **Custom Crushing & Placement**

- Recycle crushing of buildings, highways, bridges & roads
- Mobile crushing spreads

### **Crushing**

- Gravel & sand production
- Quartzite, granite, limestone & asphalt

### **Mass Excavation**

- GPS-enabled equipment
- High-volume performance

### **Road Construction & Paving**

- Aggregate placement
- Concrete batching & paving
- Drain tile

### **Shoreline Supplier**

- USACE-approved armor stone & riprap

## **AQUEOS MARINE, INC.**

Aqueos Marine has decades of experience providing subsea inspection, maintenance and repair service to both coasts. From saturation diving and remotely operated vehicles (ROV) to crew transfer and cable-laying vessels, Aqueos supports offshore wind and renewable energy projects.

## **MICHELS TRENCHLESS, INC.**

Trenchless construction is an environmentally sound way to build, repair and expand critical infrastructure in populated and remote locations with minimal surface disruptions and environmental impacts. As a global leader and innovator, we pursue ways to build connections under waterways, roads and other obstacles where conventional construction would not be possible.

### **New Installation**

- Alternative delivery models
- Auger boring
- Direct Pipe®
- Horizontal directional drilling (HDD)
- Microtunneling
- Pipe assist

### **Pipe Rehabilitation**

- Cured-in-place pipe (CIPP) & UV CIPP
- Spray-in-place pipe (SIPP)
- Sliplining
- Chemical grouting

### **Tunneling**

- Hard rock tunnel boring machines (TBM)
- Earth pressure balance TBM
- Drill blast tunneling
- Sequential excavation methods (SEM)



## **J.D. HAIR & ASSOCIATES**

The first engineering firm to provide consulting services specifically for trenchless construction, J.D. Hair & Associates combines multifactor analysis with extensive experience to develop achievable, affordable, technically sound plans. Construction monitoring services measure progress and performance.

# International Solutions



## **MICHELS TRENCHLESS, PTY LTD**

Our Australia-based crews are supported by a global team of industry experts to provide safe, unobtrusive trenchless infrastructure construction solutions.

### **Trenchless installations**

- Direct Pipe®
- Horizontal directional drilling (HDD)
- Dewatering

## **MICHELS TRENCHLESS GmbH**

Guided by our values and inspired by a desire to innovate, Michels Trenchless brings craftsmanship and quality to our trenchless construction solutions. Our dedicated European-based crew of experienced personnel are supported by a global team of industry experts and world class equipment.

### **Trenchless installations**

- Direct Pipe®
- Horizontal directional drilling (HDD)

## **MICHELS CANADA**

Michels Canada offers proven construction solutions to support Canada's energy, water and wastewater infrastructure. Our experience includes joint venture partnerships and bid-build, design-build (DB), design-bid-build (DBB) and public-private partnership (P3) delivery models.

### **Energy**

- Direct Pipe®
- Horizontal directional drilling (HDD)
- Integrity & maintenance
- Mainline pipeline
- Tunnelling

### **Infrastructure**

- Cured-in-place pipe (CIPP)
- Direct Pipe®
- Horizontal directional drilling (HDD)
- Sliplining
- Spray-in-place pipe (SIPP)
- Tunnelling

### **Power**

- Emergency response
- Live line upgrades & repairs
- Foundations
- Transmission & distribution lines

# The diversity of the Michels Family of Companies delivers end-to-end solutions for complex projects.



# The Michels Family of Companies

The Michels Family of Companies is a collection of wholly owned infrastructure and energy contractors providing solutions under the Michels brand flagship. All companies perform safe, unique, and specialized services for energy, foundations, renewables, marine, transportation, civil and water and wastewater industries. Whether operating alone or collaborating on a project, all members of the Michels Family of Companies are united by shared Core Values, quality standards and a world-class reputation upheld by Michels since 1959. Our customers receive innovative solutions, consistent quality and the convenience of one key point of contact.



An overview of the collective strength of the **MICHEL'S** Family of Companies



7,000+ people strong



18,000 pieces of equipment



50+ locations globally



ENR's Top 400 Contractors List

The Michels Family of Companies delivers safe, reliable solutions to industries focused on improving the quality of daily life throughout the world.



CIVIL



ENERGY



ENERGY TRANSITION



FOUNDATIONS



MARINE



TRANSPORTATION



WATER

## Safety is the cornerstone of our culture.

Safety is more than something we talk about. We incorporate it into everything we do. That means we provide our people with programs, tools, time and training to do what needs to be done without cutting corners or taking unnecessary risks.



## ENR Rankings

34	TOP 400 CONTRACTORS
8	PETROLEUM
8	POWER
8	WORKING ABROAD
35	NEW CONTRACTS
35	HEAVY CONTRACTORS

# We Do That ... & More

As one of the largest, most diversified energy and infrastructure construction contractors, Michels can combine our specialized services into one team capable of leading your project from preconstruction to restoration. This unified approach allows Michels to provide innovative solutions, consistent quality, and the convenience of one key point of contact and one contract for many facets of a complex project.

## CASE STUDIES



### PIPELINE FACILITIES

#### Michels Pipeline, Inc.

- Pipeline construction
- Pipe fabrication
- Mechanical installations

#### Michels Power, Inc.

- Industrial wiring
- Access roads & matting

#### Michels Construction, Inc.

- Building erection
- Foundations
- Structural concrete
- Groundwater control

#### Michels Road & Stone, Inc.

- Site preparation
- Custom crushing



### OFFSHORE WIND

#### Michels Construction, Inc.

- Ballast placement
- Dredging
- Diving
- Seawall construction
- Entry & exit shafts
- MTBM & equipment retrieval
- Port construction & rehabilitation

#### Michels Trenchless, Inc.

- Landfall (HDD, Direct Pipe, microtunnel)

#### Michels Power, Inc.

- Onshore substations
- Inside wiring
- Transmission lines
- Distribution lines
- Structures, foundations & wires

#### Michels Utility Services, Inc.

- HDPE fusing
- Underground duct banks

#### Aqueos Marine, Inc.

- Cable laying
- Divers
- Marine vessel, barge & crew support
- Survey & trenching

#### J.D. Hair & Associates

- Landfall engineering

# MICHEL<sup>®</sup>S

WE DO THAT

...

# & MORE